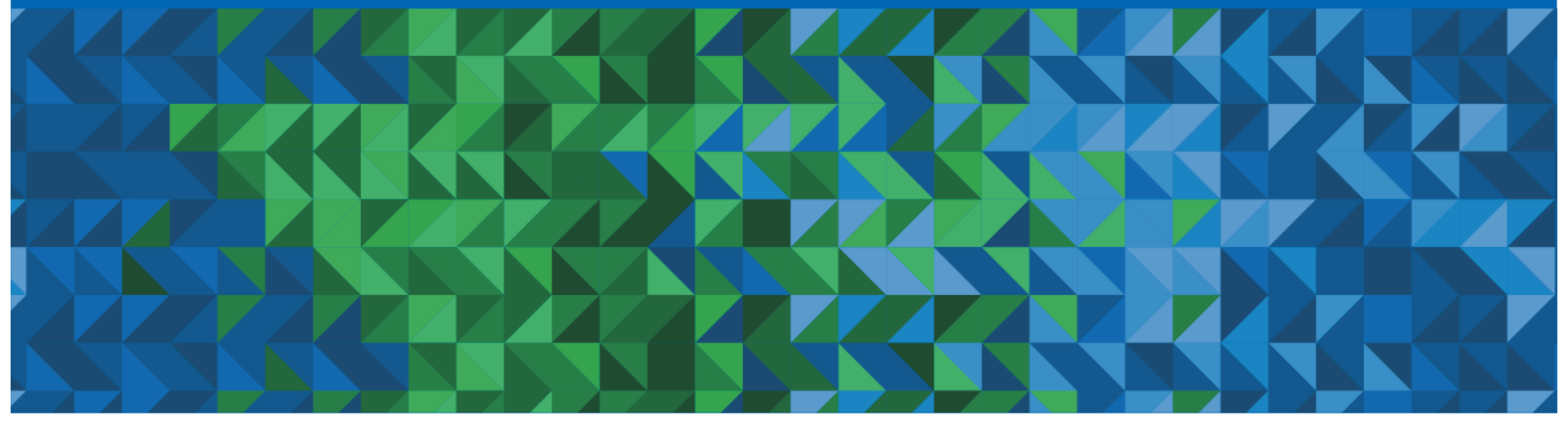




EcoLife Collections

SWITCH TO **LED**
SWITCH TO **REGOR**





Global warming is becoming a grave problem day by day. Finding and using technologies that will help save energy, reduce carbon dioxide emissions, and start to reverse climate change is the need of the hour. One of the most promising and affordable Eco-friendly technologies is LEDs.

LEDs offer big benefits for people, the planet and our pocketbooks.

PEOPLE : LEDs help reduce air pollution, making the air healthier to breathe saving us from diseases. About 12 percent of the energy we use at home powers our lighting. LED would use 70-90 percent less energy.

PLANET : If every household replace just one light bulb, we would save enough energy to light millions of homes for a whole year. We would also prevent greenhouse gas emissions as LEDs are a terrific way to fight climate change.

POCKETBOOK : When we save energy, simultaneously we save money. Though LED may cost a little more up front, it can save electricity costs over the lifetime of the product.

REGOR LED promotes and contributes to energy saving technologies. It's high time, we switch to eco-lighting products to save our planet.



CONTENTS

04
COMPANY
REGOR Leads In Energy Efficient Lighting

05
PHILOSOPHY
Make Light Alive

06
QUALITY
Excellence In Product Innovation

07
TECHNOLOGY
Experience The Power of Technology

08
WHY REGOR LED ?
A Light Which Is Light On Your Wallet Too

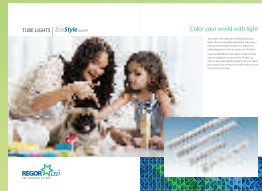
09
HOW TO CHOOSE
A Smarter, Hassle-Free Lifestyle

10
SERVICEABILITY
Creating Lighting Experience

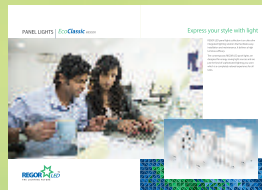
12
SUSTAINABILITY
Green Living With The Eco-Lighting

COLLECTIONS

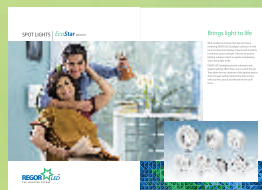
INDOOR



16
TUBE LIGHTS *EcoStyle*
Color your world with light



24
PANEL LIGHTS *EcoClassic*
Express your style with light



36
SPOT LIGHTS *EcoStar*
Brings light to life



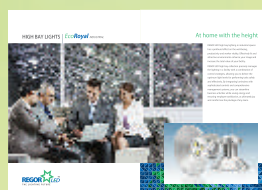
OUTDOOR

46
STREET LIGHTS *EcoGreen*
Connects to nature and saves energy in style



INDUSTRIAL

54
FLOOD LIGHTS *EcoSprint*
Saving energy with ambiance



60
HIGH BAY LIGHTS *EcoRoyal*
At home with the height

COMPANY

REGOR LEADS IN ENERGY EFFICIENT LIGHTING

REGOR is proud to be a global leading brand from Acculite Devices to have exclusively manufactured low-energy industrial and domestic lighting products since its initiation offering a decade of industry expertise and innovation to the lighting market in India.



The brand has gone from strength to strength since 2005; and has come from developing the industry's classic CFL to now boasting revolutionary Smart Lighting Solution, a full range of LED industrial components and a suite of LED luminaires.

REGOR products have wide distribution throughout India and abroad. By setting environmental management as one of the company's highest priorities, REGOR focuses on eco-friendly environmental processes from initial design to manufacturing, research and development, and the disposal and recycling of its products.

PHILOSOPHY

OUR PHILOSOPHY - MAKE LIGHT ALIVE

A glowing sphere of light is symbolic of life. Light power is in its ability to provide a dynamic focus in an ever-changing universe. Light is alive, radiating its colorful character and sparkling vibrancy to the world.

REGOR is recognized around the world as a provider of energy-saving lighting solutions that make a positive difference to the quality of life. With its innovative LED lighting products in a variety of sizes, shapes, color temperatures and features, REGOR offers a way of life that substantially benefits consumers as well as the environment. With an emphasis on reducing the environmental impact, from product development to disposal and recycling, REGOR leads the way with its innovations and new lighting technology, striving for a better tomorrow for all. The light that lights up the world in a sustainable and socially responsible way.

MAKE
LIGHT
ALIVE



NO INFRARED RAYS
NO MERCURY
NO UV RAYS

QUALITY

EXCELLENCE IN PRODUCT INNOVATION AND QUALITY

REGOR products are made using premium quality materials and innovative technologies within stringent control measures, to deliver maximum performance and energy efficiency.



REGOR products comply with the highest quality standards. REGOR manufacturing plants are equipped with state-of-the-art assembly lines, state of the art laboratories and life-test rooms.

All REGOR products are designed and tested with standards have been implemented to ensure that the processes deliver innovative, reliable and safe products with high quality.

To ensure that REGOR products comply with the highest quality standards, company manufacturing plants are equipped with their own assembly lines and an in-house laboratory certified which is eligible to

perform on-site testing.

REGOR works under the most stringent management and quality systems. The green elements of the production process is maximized, employee's welfare is prioritized with social responsibility towards the community.

TECHNOLOGY

EXPERIENCE THE POWER OF TECHNOLOGY



REGOR is committed to the better lighting future by making eco-friendly lighting products with:

- Better energy efficiency
- Minimum environmental impact
- Zero hazardous substances
- Increased product life
- Recycled and recyclable content

REGOR has different methods of controlling light but none involve the multiple lens arrays favoured by many manufacturers to direct light output since amongst other things these tend to trap heat, meaning a larger heat sink is required. REGOR uses; parabolic reflectors with dual axial LED and Thermal Conductive technology, single LED plus optical reflectors for precise beam control where space is limited or simply LED plus prismatic controller for basic halogen equivalents. All of these methods allow better thermal management, smaller heat sinks and true size retrofit profiles across the whole lamp range.

REGOR Thermal Conductive technology uses a unique design of 'heat drain' across the reflector to dissipate heat efficiently from the dual axial LED to prevent deterioration of the chips and other components. The technology also gives the lamps a longer life.

Thanks to careful thermal management, REGOR's LED lamps all combine the higher efficiency, lifetime, and reliability benefits of LEDs, with comparable output levels of many conventional light sources at only a fraction of their power consumption.

WHY REGOR LED ?



A LIGHT WHICH IS LIGHT ON YOUR WALLET TOO

Light Emitting Diodes (LEDs) are the latest and rapidly developed technological advancement in the lighting industry. They are extremely energy efficient and perfect replacement of traditional bulbs with distinct advantages such as exceptionally longer life, reduced maintenance costs and higher safety.



Efficient

LEDs can achieve energy efficiency and consume 85% less power than incandescent bulbs. Since LEDs use only a fraction of the energy of incandescent bulbs there is a dramatic decrease in electricity costs. The long life span feature of LEDs helps achieve even more energy efficiency. LED lamps have a long life span up to 50,000 hours. LED lamps will last over 17 years before needing replacement.



Economical

Using REGOR LED lamps reduces energy cost, as they use 85% less energy than incandescent bulbs. Long life span of LEDs tremendously reduces labour cost and maintenance cost of replacing bulbs, especially in commercial applications with massive use of LED lamps. Using LED lamps also reduces cooling cost as they generate very little heat, which creates a cooler environment and less electrical energy for air-conditioning. In the long-run, LED lamps lower the total cost of lighting. As LED lighting technology advances its prices will continue to drop, making it a more economical option.



Eco-friendly

REGOR LED lights are free of toxic chemicals like mercury or harmful gases. In production process, every step is carefully engineered to reduce the manufacturer's and users' carbon footprints and produce minimal harm to the environment. LED lamps are made with recyclable materials and the production process is highly automated with minimum energy used to produce each component. Recycled papers are used for all packaging materials. The advanced dimming and smart lighting control functions of some LEDs can help people save more energy too. Leading us to a greener future, we can save energy and reduce global warming by using LED lights.

HOW TO CHOOSE LED LIGHTS

A SMARTER, HASSLE-FREE LIFESTYLE

Most LED lights are designed to seamlessly fit into the current lighting fixtures with the same lamp base and similar shape as the traditional bulbs. Choose the right LED retrofit lamps with high-quality light output and low energy usage. Also, you don't need to bother about replacing the bulbs frequently because LEDs are extremely long lasting. A smarter, hassle-free lifestyle is just a few steps away.



WARM WHITE LIGHTING

COOL WHITE LIGHTING



Choose Right Shape

Recessed lighting or spotlighting, LED lamps are in different shapes and the right lamp shape should be selected to fit your lighting fixture. It is easy to find a replacement LED bulb with the same shape as your traditional bulb.



Select Right Lamp Base

It is important to know the lamp base of your current lighting fixture. The correct fitting bases must be chosen as they are not interchangeable.



Colour Temperature

LED lamps have many different light colours like, warm white or cool white with many variations. Warm white lamps have a colour temperature around 3000K and produce a yellowish beige light source for cozy homes. Cool white lamps have a colour temperature of 6000K or above and produce a brighter and bluer white light source. They are ideal for commercial venues or kitchens and bathrooms which requires more practicality.



Brightness

The lumens determine brightness instead of wattage in LEDs. An LED lamp uses much lower wattage than traditional lamps to generate the same light output. For example an incandescent lamp at 60W can be replaced by an LED classic lamp at only 9.5W. Lumen efficiency (lm/W) measures how much light is generated from a light source per watt. The higher the lumen efficiency, the brighter the lamp will be.



Colour Rendering

Colour Rendering measures the effectiveness of an LED lamp in revealing the true colours of objects. Its highest possible value is 100, but it may vary quite markedly between LED brands. For example, for gallery or shop displays, it is important that you select LED lamps with high colour rendering as it affects the true colour of all the objects.



Beam Angle

The beam angle signifies how widespread the light source is. Narrow beam angled LEDs work well for accent lighting to highlight the objects. Whereas the wide beam angle LEDs are more suitable for ambient lighting to provide general illumination.



Quality Matters

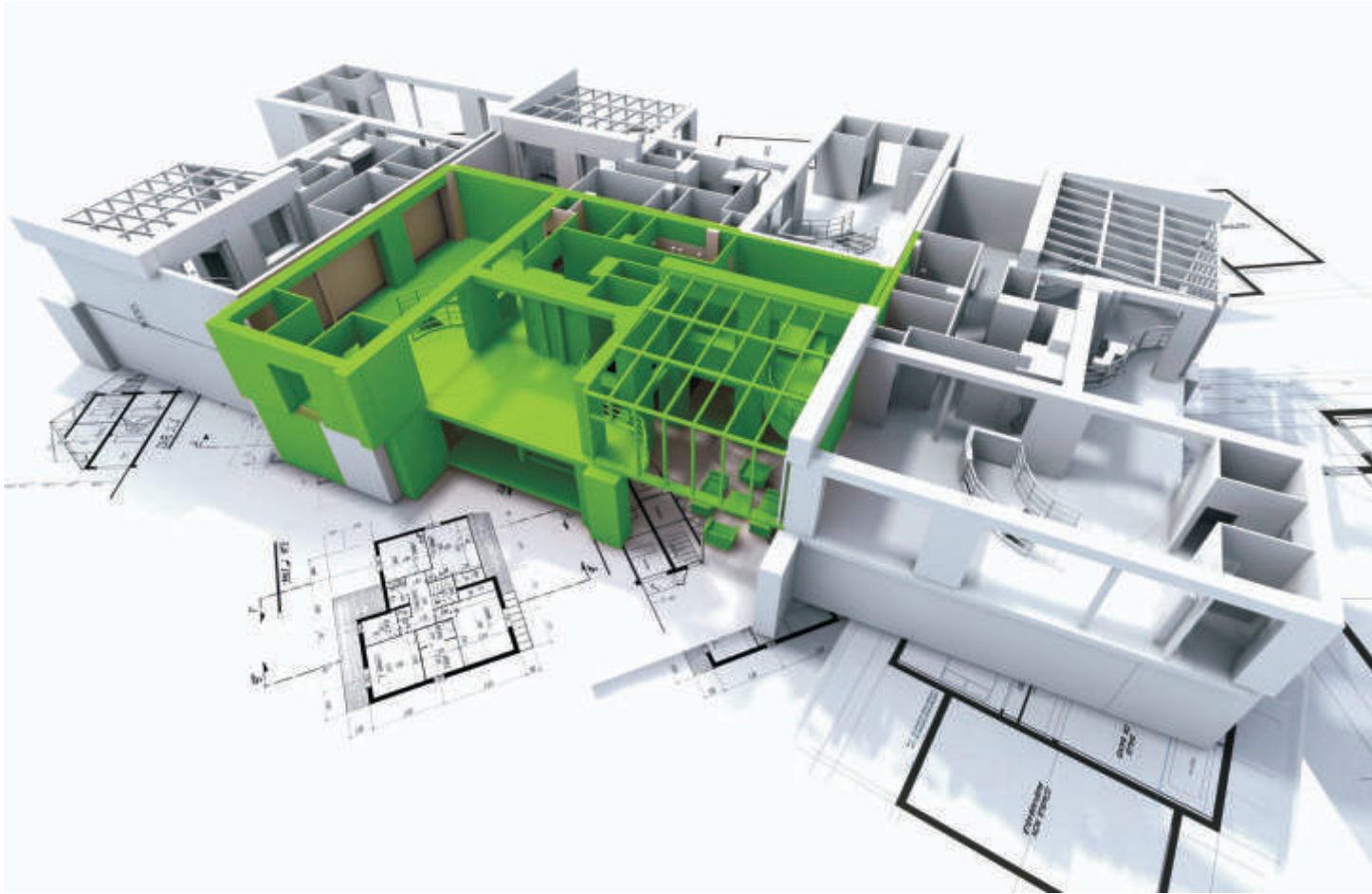
The high-quality LED which produce a more desirable lighting effect and last longer than other bulbs. Always buy those with the Energy Label that clearly displays and rates the light bulb in terms of a set of energy efficiency classes.



Durability

Rated life is a statistical estimation of an average operational life of the products. The rated life of a typical LED lamp ranges from 15,000 to 70,000 hours. This is 15 to 70 times longer than a traditional incandescent lamp. The average life is 50,000 hours.

SERVICEABILITY



CREATING LIGHTING EXPERIENCE

Consulting to Saving Energy

REGOR develops a straightforward and dynamic approach to meet their clients' energy challenges. We provide energy management solutions and energy strategy analysis on lighting planning. Our main concern is to support our clients with our know-how, techniques and analyse methods and options on how to reduce energy consumption. Therefore our services include time frames, payback period formula of the investment and maintenance costs.



Lighting Planning Laboratory of Engineering

The lighting design studio of REGOR offers a unique lighting study and supply services from concept to realization. The design team of REGOR offers a wide range of services on lighting projects focusing on sustainable lighting reducing the environmental impact.

The energy saving solutions in the lighting design and the innovative concepts lead to highly qualitative lighting results. REGOR specializes in interior and exterior lighting planning and provides consultation and assistance in application study of lighting systems and lighting design. The architects and engineers use the appropriate software for light planning and photometry and introduce a new way of designing in lighting technology.



Product and System Design Engineering

A team of engineers design technologically advanced fixtures of environmental friendly materials and ergonomic shapes. The aim is the constant improvement of the luminaire designs following the rapidly developing lighting requirements. Mechanical engineers supervise the installation of lightings and precede with test controls. The selection of luminaires and the properties of lighting equipments play an important role in the lighting synthesis of the proposal. The philosophy of REGOR is to activate people towards new environmental eco-friendly lighting methods.

The experienced team of REGOR works on new techniques and fulfills every lighting requirement of a project. Dealing with new requirements which are mostly market related and also follow each project. REGOR developed a design team with technical skills to manufacture special constructions of luminaires. The custom made products fit the needs of every new project. The design team creates, innovates and experiences on demanding design projects and also meets the ecological and economic requirements.

SUSTAINABILITY

BEGIN A GREEN LIVING WITH THE ECO-LIGHTING

Putting a high priority on reducing the environmental impact, from product development to disposal and recycling, REGOR offers a way of life that substantially benefits consumers as well as the environment.



Objectives

- Better utilization of resources
- Wastage recycling
- Energy conservation
- Operation awareness
- Design for environment

Environmental Policy

REGOR is passionately dedicated in enhancing the quality of life and conserving the environment. By setting environmental management as one of our highest priorities, REGOR is committed to reducing the environmental impact arising across the product life cycle, which is from design, manufacture, packaging and transportation, use, disposal and recycle. With our Environmental Policy, we strive to:

- **Implement pollution-free processes in the entire product life cycle**
- **Use renewable or recyclable materials to minimize the use of resources**
- **Comply with environmental legislation and industry code of practice**
- **Promote environmental protection awareness among staff and business partners**

Sustainable Development

With our product development towards sustainable development, our goal is to make eco-friendly products offering better energy-efficiency, creating least environmental impact, avoiding hazardous substances, offering better durability and life expectancy and with recycled content and recyclability.

It's Efficient,
Economical and Eco-friendly





REGOR offers a comprehensive product range.
The innovative character of company is well demonstrated through it.

TUBE LIGHTS | *EcoStyle* INDOOR

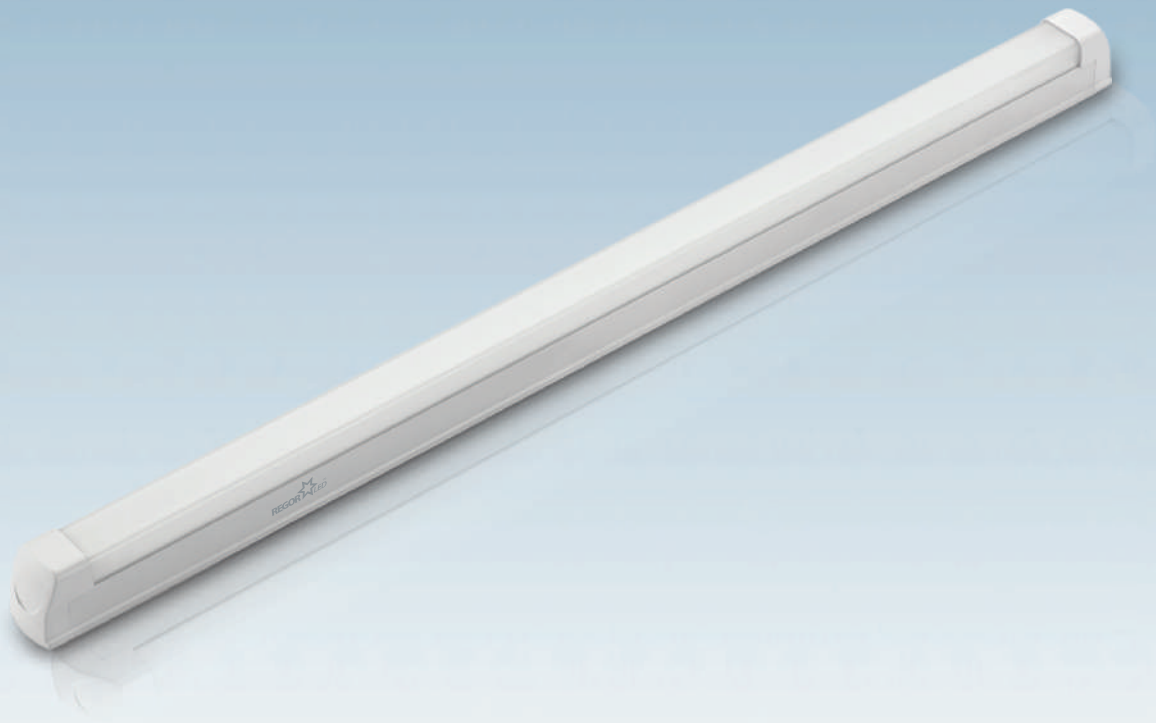


Color your world with light

The modern line collection of REGOR LED linear lights offers an even light distribution. They have a fully enclosed design that delivers a robust and refined appearance with an instant start function.

Count on REGOR LED linear lights to add the right amount of glamour to your rooms. Fill them up with an astounding lighting impact. Use it to reflect your mood or set one for the occasion which would be fun and joy for ever.





Choose the Regor high performance energy saving tube lights based upon green light technology that will bring down the electricity costs and provide wide and uniform light distribution across horizontal and vertical surfaces enhancing the beauty of the environment.



TUBELIGHTS

PRODUCT CODE	RTL-201	RTL-202	RTL-203
--------------	---------	---------	---------

TECHNICAL SPECIFICATIONS

POWER	7W T8	14W T8	28W T8
VOLTAGE	140-290 Volt AC, 50Hz		
CURRENT(@230V)	0.030 A	0.060 A	0.120 A
POWER FACTOR	> 0.90		

LIGHTING SPECIFICATIONS

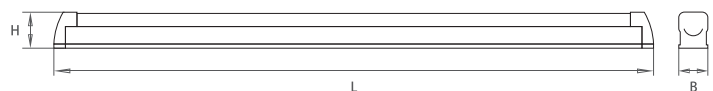
LUMENS	672	1336	2576
CCT	3000K / 4000K / 6500K		
CRI	> 80		

PHYSICAL SPECIFICATIONS :

DIMENSIONS (mm)	326x30x37	605x30x37	1210x30x37
-----------------	-----------	-----------	------------

USAGE

TYPE	INDOOR
APPLICATIONS	RESIDENTIAL, OFFICE, HOSPITALS, COMMERCIAL, EDUCATIONAL BUILDINGS, BANKS





Choose the Regor high performance energy saving tube lights based upon green light technology that will bring down the electricity costs and provide wide and uniform light distribution across horizontal and vertical surfaces enhancing the beauty of the environment.

**TUBELIGHTS**

PRODUCT CODE

RTL-211

TECHNICAL SPECIFICATIONS

POWER

20W T5

VOLTAGE

140-290 Volt AC, 50Hz

CURRENT(@230V)

0.087 A

POWER FACTOR

> 0.90

LIGHTING SPECIFICATIONS

LUMENS

1850

CCT

3000K / 4000K / 6500K

CRI

> 80

PHYSICAL SPECIFICATIONS :

DIMENSIONS (mm)

1210x25x34

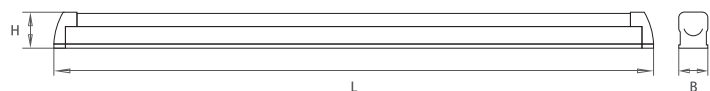
USAGE

TYPE

INDOOR

APPLICATIONS

RESIDENTIAL, OFFICE, HOSPITALS, COMMERCIAL, EDUCATIONAL BUILDINGS, BANKS





Regor PL Lights, best in efficiency and savings with soft and uniform spread of light facilitated by ribbed housing and diffuser. High efficiency powered with a reliable driver assures a long maintenance-free life, a perfect solution for your high-end interior lighting needs, best used for replacement of old fluorescent 36W PL.



PL (4PIN)

PRODUCT CODE	R4P-221	R4P-222
--------------	---------	---------

TECHNICAL SPECIFICATIONS :

POWER	9W	18W
VOLTAGE	140-290 Volt AC, 50Hz	
CURRENT(@230V)	0.039 A	0.0782 A
POWER FACTOR	> 0.90	

LIGHTING SPECIFICATIONS :

LUMENS	860	1715
CCT	3000K / 4000K / 5700K	
CRI	> 80	

PHYSICAL SPECIFICATIONS :

DIMENSIONS (mm)	227x36x27	419x36x27
-----------------	-----------	-----------

USAGE

TYPE	INDOOR
APPLICATIONS	RESIDENTIAL, OFFICE, HOSPITALS, COMMERCIAL, EDUCATIONAL BUILDINGS, BANKS, (Flourescent 36w PL Replacement)



PANEL LIGHTS | *EcoClassic* INDOOR

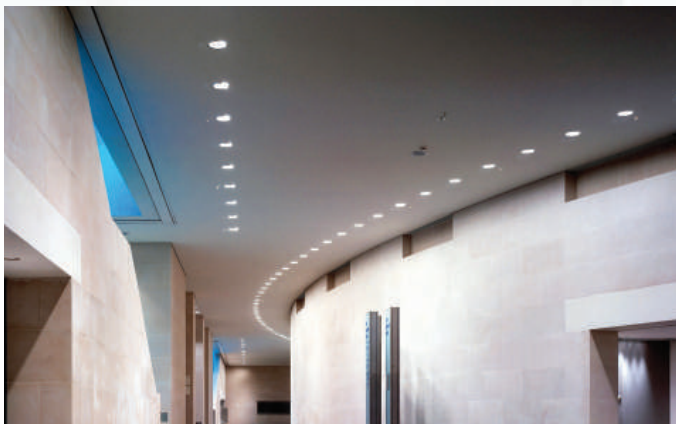


Express your style with light

REGOR LED panel lights collection is an ultra slim integrated lighting solution that facilitates easy installation and maintenance. It delivers a high luminous efficacy.

The contemporary REGOR LED panel lights are designed for energy saving light sources and are just the kind of sophisticated lighting you want which is a completely relaxed experience for all tasks.





Regor Slim Panel Lights are ultra slim integrated lighting solution that facilitates easy installation and maintenance and delivers a high luminous efficacy.



SLIM SQUARE & ROUND

PRODUCT CODE	RPN-601/611	RPN-602/612	RPN-603/613	RPN-604/614	RPN-605/615
--------------	-------------	-------------	-------------	-------------	-------------

TECHNICAL SPECIFICATIONS :

POWER	6W	9W	12W	15W	18W
VOLTAGE	140-290 Volt AC, 50Hz				
CURRENT(@230V)	0.026 A	0.039 A	0.052 A	0.065 A	0.078 A
POWER FACTOR	> 0.90				

LIGHTING SPECIFICATIONS :

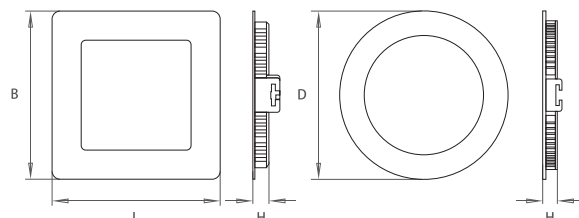
LUMENS	408	621	864	1035	1278
CCT	3000K / 4000K / 6500K				
CRI	> 80				

PHYSICAL SPECIFICATIONS :

SQUARE DIMENSIONS (mm)	120x120x22	145x145x22	175x175x22	200x200x22	225x225x22
SQUARE CUTOUT SIZE	100x100	130x130	160x160	180x180	210x210
ROUND DIMENSIONS (mm)	φ 120x22	φ 145x22	φ 175x22	φ 200x22	φ 225x22
ROUND CUTOUT SIZE	φ 105	φ 130	φ 160	φ 180	φ 210

USAGE

TYPE	INDOOR
APPLICATIONS	RESIDENTIAL, OFFICE, HOSPITALS, COMMERCIAL, EDUCATIONAL BUILDINGS, BANKS





The Regor Back Panel Lights are designed to light up indoor spaces. Apart from being energy-efficient and environment friendly, they impart a sense of contemporary illumination.



BACK SQUARE & ROUND

PRODUCT CODE	<u>RPN-621/631</u>	<u>RPN-622/632</u>	<u>RPN-623/633</u>	<u>RPN-624/634</u>	<u>RPN-625/635</u>
--------------	--------------------	--------------------	--------------------	--------------------	--------------------

TECHNICAL SPECIFICATIONS :

POWER	<u>6W</u>	<u>9W</u>	<u>12W</u>	<u>15W</u>	<u>18W</u>
VOLTAGE	<u>140-290 Volt AC, 50Hz</u>				
CURRENT(@230V)	<u>0.026 A</u>	<u>0.039 A</u>	<u>0.052 A</u>	<u>0.065 A</u>	<u>0.078 A</u>
POWER FACTOR	<u>> 0.90</u>				

LIGHTING SPECIFICATIONS :

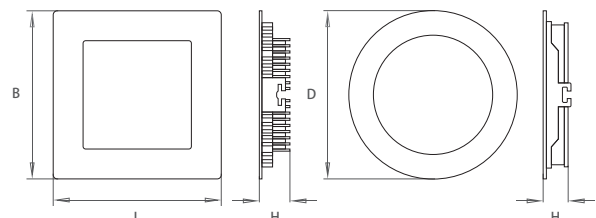
LUMENS	<u>470</u>	<u>710</u>	<u>970</u>	<u>1190</u>	<u>1430</u>
CCT	<u>3000K / 4000K / 6500K</u>				
CRI	<u>> 80</u>				

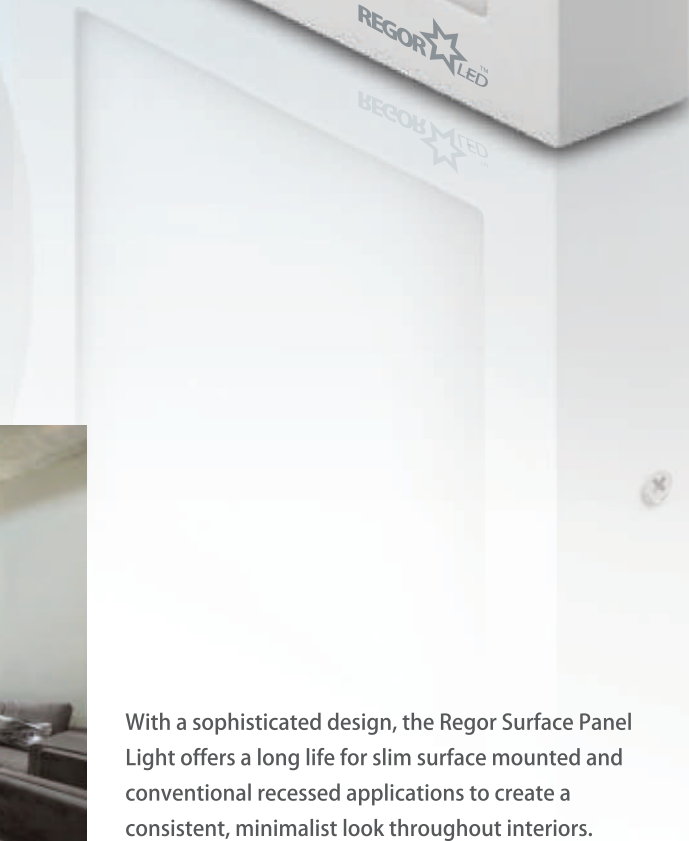
PHYSICAL SPECIFICATIONS :

SQUARE DIMENSIONS (mm)	<u>120x120x22</u>	<u>145x145x22</u>	<u>175x175x22</u>	<u>200x200x22</u>	<u>225x225x22</u>
SQUARE CUTOUT SIZE	<u>100x100</u>	<u>130x130</u>	<u>160x160</u>	<u>180x180</u>	<u>210x210</u>
ROUND DIMENSIONS (mm)	<u>φ 120x22</u>	<u>φ 145x22</u>	<u>φ 175x22</u>	<u>φ 200x22</u>	<u>φ 225x22</u>
ROUND CUTOUT SIZE	<u>φ 105</u>	<u>φ 130</u>	<u>φ 160</u>	<u>φ 180</u>	<u>φ 210</u>

USAGE

TYPE	<u>INDOOR</u>
APPLICATIONS	<u>RESIDENTIAL, OFFICE, HOSPITALS, COMMERCIAL, EDUCATIONAL BUILDINGS, BANKS</u>





With a sophisticated design, the Regor Surface Panel Light offers a long life for slim surface mounted and conventional recessed applications to create a consistent, minimalist look throughout interiors.



SURFACE SQUARE & ROUND

PRODUCT CODE	RPN-701/711	RPN-703/713	RPN-705/715	RPN-706/716
--------------	-------------	-------------	-------------	-------------

TECHNICAL SPECIFICATIONS

POWER	6W	12W	18W	24W
VOLTAGE	140-290 Volt AC, 50Hz			
CURRENT(@230V)	0.026 A	0.052 A	0.078 A	0.104 A
POWER FACTOR	> 0.90			

LIGHTING SPECIFICATIONS

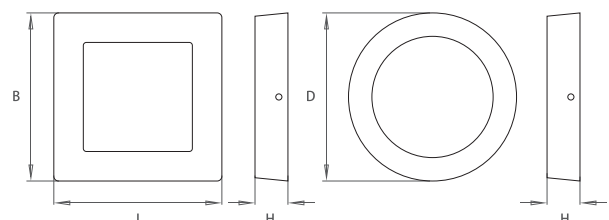
LUMENS	408	864	1278	1704
CCT	3000K~6500K			
CRI	> 80			

PHYSICAL SPECIFICATIONS

SQUARE DIMENSIONS(mm)	120x120x35	175x175x35	225x225x35	300x300x35
ROUND DIMENSION (mm)	φ 120x35	φ 175x35	φ 225x35	φ 300x35

USAGE

TYPE	INDOOR
APPLICATIONS	RESIDENTIAL, OFFICE, HOSPITALS, COMMERCIAL, EDUCATIONAL BUILDINGS, BANKS





Regor Rectangle Exquisite Panel Light are crafted for luxury. Their smooth borders are a perfect solution for your high-end interior lighting.

LED RECTANGLE EXQUISITE PANEL LIGHTS

EcoClassic
INDOOR



RECTANGLE EXQUISITE

PRODUCT CODE	RPN-661	RPN-671	RPN-662	RPN-672	RPN-663	RPN-673
--------------	---------	---------	---------	---------	---------	---------

TECHNICAL SPECIFICATIONS :

POWER	16W	22W	24W	32W	40W	64W
VOLTAGE	140-290 Volt AC, 50Hz					
CURRENT(@230V)	0.070 A	0.096 A	0.105 A	0.140 A	0.174 A	0.278 A
POWER FACTOR	> 0.90					

LIGHTING SPECIFICATIONS :

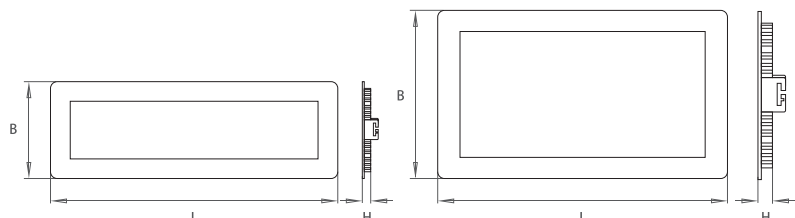
LUMENS	1105	1532	1662	2226	2745	4255
CCT	3000K / 4000K / 6500K					
CRI	> 80					

PHYSICAL SPECIFICATIONS :

SIZE	1' x 11"	2' x 11"	1' x 36"	2' x 36"	1' x 40"	2' x 40"
DIMENSIONS (mm)	295x102x22	295x173x22	510x150x22	510x222x22	1220x158x22	1220x230x22
CUTOUT SIZE (mm)	282x91	282x160	495x135	495x207	1195x135	195x207

USAGE

TYPE	INDOOR
APPLICATIONS	RESIDENTIAL, OFFICE, HOSPITALS, COMMERCIAL, EDUCATIONAL BUILDINGS, BANKS





Regor Square Exquisite Panel Lights are designed with high efficacy that ensure a uniform and optimum light output which creates a vibrant and uniform illumination while consuming significantly lesser energy.

LED SQUARE EXQUISITE PANEL LIGHTS

EcoClassic
INDOOR



SQUARE EXQUISITE

PRODUCT CODE	RPN-681	RPN-682
--------------	---------	---------

TECHNICAL SPECIFICATIONS :

POWER	24W	48W
VOLTAGE	140-290 Volt AC, 50Hz	
CURRENT(@230V)	0.104 A	0.156 A
POWER FACTOR	> 0.90	

LIGHTING SPECIFICATIONS :

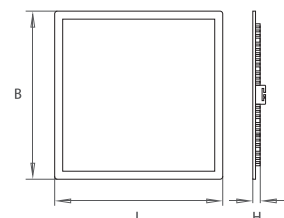
LUMENS	1685	3270
CCT	3000K / 4000K / 6500K	
CRI	> 80	

PHYSICAL SPECIFICATIONS :

SIZE	1' x 1'	2' x 2'
DIMENSIONS (mm)	300x300x22	595x595x22
CUTOUT SIZE (mm)	285x285	575x575

USAGE

TYPE	INDOOR
APPLICATIONS	RESIDENTIAL, OFFICE, HOSPITALS, COMMERCIAL, EDUCATIONAL BUILDINGS, BANKS



SPOT LIGHTS | **EcoStar** INDOOR

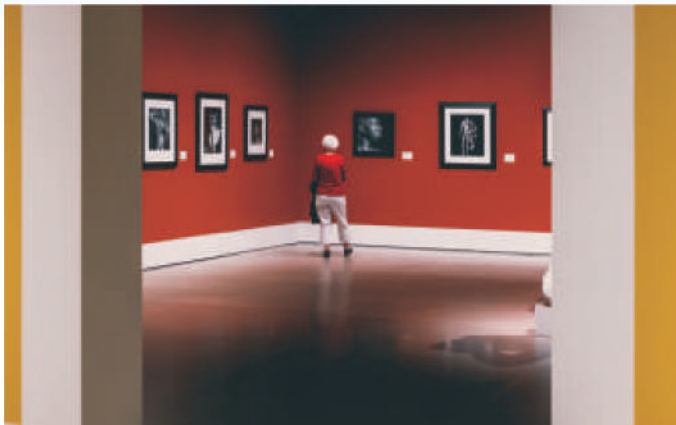


Brings light to life

With excellent luminous intensity and colour rendering REGOR LED Spotlights collection is with no UV. Embrace the feeling of purity and simplicity to enhance space and light. They are innovative lighting solutions which are gentle and pleasing which bring light to life.

REGOR LED Spotlights provide a dramatic and elegant lighting effect that's sure to catch the eye. They allow the true character of the lighting area to shine through without distractions that remains with you like a proud and blessed winner at all times.





Regor LED Round Button Spot Light's compact size and sharp light beam are ideal for illuminating all size objects vibrantly. It's a durable, reliable and attractive product, making it ideal for indoor lighting.

LED ROUND BUTTON SPOT LIGHTS | **EcoStar** INDOOR



BUTTON SQUARE & ROUND

PRODUCT CODE	RSP-501A/511A	RSP-501 / 511	RSP-502 /512	RSP-505 / 515
--------------	---------------	---------------	--------------	---------------

TECHNICAL SPECIFICATIONS

POWER	1W	2W	3W	5W
VOLTAGE	140-290 Volt AC, 50Hz			
CURRENT(@230V)	0.004 A	0.008 A	0.013 A	0.022 A
POWER FACTOR	> 0.90			

LIGHTING SPECIFICATIONS

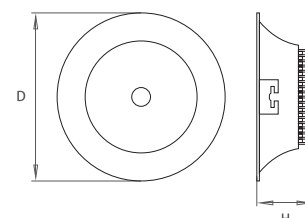
LUMENS	75	155	234	390
CCT	3000K / 4000K / 6500K, RED, GREEN, BLUE			
CRI	> 80 (3000K~6500K)			

PHYSICAL SPECIFICATIONS

SQUARE DIMENSIONS (mm)	38x38x22	38x38x22	50x50x22	65x65x22
SQUARE CUTOUT SIZE	33x33	33x33	42x42	52x52
ROUND DIMENSIONS (mm)	φ 39x22	φ 39x22	φ 50x22	φ 62x22
ROUND CUTOUT SIZE	φ 33	φ 33	φ 42	φ 52

USAGE

TYPE	INDOOR
APPLICATIONS	RESIDENTIAL, OFFICE, COMMERCIAL, MUSEUMS, LABORATORIES, HIGH RISE DECOR, BALCONY





Regor LED Junction spot light's compact size and sharp light beam are ideal for illumination all size objects vibrantly.



SPOT LIGHT JUNCTION

PRODUCT CODE	RSP-503
--------------	---------

TECHNICAL SPECIFICATIONS

POWER	3W J
VOLTAGE	140-290 Volt AC, 50Hz
CURRENT(@230V)	0.013 A
POWER FACTOR	> 0.90

LIGHTING SPECIFICATIONS

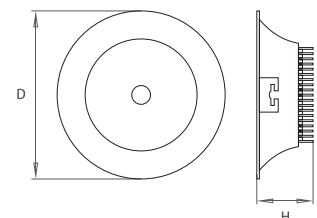
LUMENS	230
CCT	3000K / 4000K / 6500K
CRI	> 80

PHYSICAL SPECIFICATIONS

SQUARE DIMENSIONS (mm)	NA
SQUARE CUTOUT SIZE	NA
ROUND DIMENSIONS (mm)	ϕ 69x25
ROUND CUTOUT SIZE	ϕ 42

USAGE

TYPE	INDOOR
APPLICATIONS	RESIDENTIAL, OFFICE, COMMERCIAL, MUSEUMS, LABORATORIES, HIGH RISE DECOR, BALCONY





This compact size spot light is designed to light book shelves, cabinets, desks, and any any other place that needs to be highlighted. Regor LED Square Button Spot Light's compact size and sharp light beam are ideal for illumination all size objects vibrantly.



FIX & SWIVEL SQUARE & ROUND

PRODUCT CODE	RSP-523/533	RSP-524 /534
--------------	-------------	--------------

TECHNICAL SPECIFICATIONS

POWER	7W	10W
VOLTAGE	140-290 Volt AC, 50Hz	
CURRENT(@230V)	0.030 A	0.043 A
POWER FACTOR	> 0.90	

LIGHTING SPECIFICATIONS

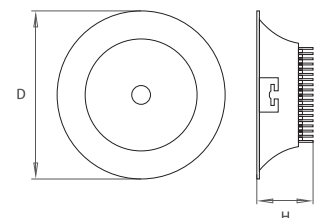
LUMENS	540	772
CCT	3000K / 4000K / 6500K	
CRI	> 80	

PHYSICAL SPECIFICATIONS

SQUARE DIMENSIONS (mm)	83x83x55	100x100x68
SQUARE CUTOUT SIZE	72x72	80x80
ROUND DIMENSIONS (mm)	φ 88x55	φ 100x68
ROUND CUTOUT SIZE	φ 72	φ 80

USAGE

TYPE	INDOOR
APPLICATIONS	RESIDENTIAL, OFFICE, COMMERCIAL, MUSEUMS, LABORATORIES, HIGH RISE DECOR, BALCONY





Designed for precision spot lighting, the Regor Square and Round Spot Lights are perfect lighting, allowing you to maintain a consistent style no matter what type of illumination your space requires.



FIX & SWIVEL SQUARE & ROUND

PRODUCT CODE	RSP-526	RSP-528
--------------	---------	---------

TECHNICAL SPECIFICATIONS

POWER	20W	30W
VOLTAGE	140-290 Volt AC, 50Hz	
CURRENT(@230V)	0.087 A	0.131 A
POWER FACTOR	> 0.90	

LIGHTING SPECIFICATIONS

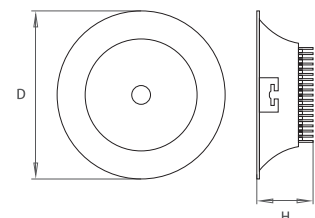
LUMENS	1553	2335
CCT	3000K / 4000K / 6500K	
CRI	> 80	

PHYSICAL SPECIFICATIONS

SQUARE DIMENSIONS (mm)	NA	NA
SQUARE CUTOUT SIZE	NA	NA
ROUND DIMENSIONS (mm)	φ 150	φ 195
ROUND CUTOUT SIZE	φ 125	φ 165

USAGE

TYPE	INDOOR
APPLICATIONS	RESIDENTIAL, OFFICE, COMMERCIAL, MUSEUMS, LABORATORIES, HIGH RISE DECOR, BALCONY



STREET LIGHTS | *EcoGreen* OUTDOOR



REGOR  **LED**®
THE LIGHTING FUTURE

Connects to nature and saves energy in style

REGOR LED eco collection enables conservation of energy in street lighting while maintaining optimal illumination to help make our cities and towns smart, safe and sustainable with longer product life delivering lifetime value.

REGOR LED street lights are a breakthrough concept that implies you don't have to compromise on design or light quality while caring about environment. They give your garden or terrace stylish contemporary design looks, natural white light and energy efficiency that compliments life with perfect harmony and togetherness !





Regor Glass Series Street Lights beautifully illuminate streets & pathways and allows people to be free to enjoy outdoors and at the same time feel secure.

LED STREET LIGHTS GLASS | EcoGreen OUTDOOR



GLASS SERIES

PRODUCT CODE	RSL-301	RSL-302
--------------	---------	---------

TECHNICAL SPECIFICATIONS

POWER	15W	25W
VOLTAGE	140-290 Volt AC, 50Hz	
CURRENT(@230V)	0.065A	0.108A
POWER FACTOR	> 0.90	

LIGHTING SPECIFICATIONS

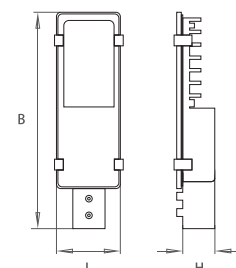
LUMENS	1436	2383
CCT	3000K / 4000K / 6500K	
CRI	> 80	

PHYSICAL SPECIFICATIONS

DIMENSIONS (mm)	326 x 100 x 58	345 x 138 x 56
PIPE ID (mm)	φ 42	
IP	IP65	

USAGE

TYPE	OUTDOOR
APPLICATIONS	ROADS, HIGHWAYS, INDUSTRIES, PLAY GROUNDS, PARTY PLOTS, PARKINGS





Designed to efficiently illuminate larger spaces, the Regor Frame Series Street Lights bring drastic improvements in thermal efficiency. With high degree of ingress protection and reliable LED driver, they provide a maintenance-free system & long service life, thus enhancing performance.

LED STREET LIGHTS FRAME

EcoGreen
OUTDOOR



FRAME SERIES

PRODUCT CODE	RSL-311	RSL-312	RSL-313	RSL-314	RSL-315	RSL-316
--------------	---------	---------	---------	---------	---------	---------

TECHNICAL SPECIFICATIONS

POWER	40W	60W	80W	100W	150W	200W
VOLTAGE	140-290 Volt AC, 50Hz					
CURRENT(@230V)	0.174A	0.261A	0.348A	0.435A	0.652A	0.0.870A
POWER FACTOR	> 0.90					

LIGHTING SPECIFICATIONS

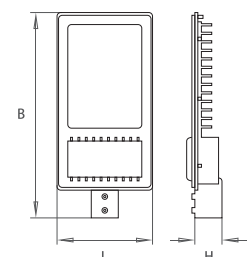
LUMENS	3813	5712	7595	9480	14202	18905
CCT	3000K / 4000K / 6500K					
CRI	> 80			> 70		

PHYSICAL SPECIFICATIONS

DIMENSIONS (mm)	343x133x68	392x185x84	460x230x87	460x230x87	520x258x86	593x290x91
PIPE ID (mm)	φ42	φ54	φ54	φ54	φ58	φ63
IP	IP67					

USAGE

TYPE	OUTDOOR
APPLICATIONS	ROADS, HIGHWAYS, INDUSTRIAL, PLAY GROUNDS, PARTY PLOTS, PARKINGS





Regor COB Series Street Lights with aesthetics and compact design have best in class efficiency resulting in high energy saving, better thermal management and maintenance free long service life to provide a reliable and sturdy performance.



COB SERIES

PRODUCT CODE	RSL-321	RSL-322	RSL-323
--------------	---------	---------	---------

TECHNICAL SPECIFICATIONS

POWER	30W	50W	100W
VOLTAGE	140-290 Volt AC, 50Hz		
CURRENT(@230V)	0.130A	0.217A	0.435A
POWER FACTOR	> 0.90		

LIGHTING SPECIFICATIONS

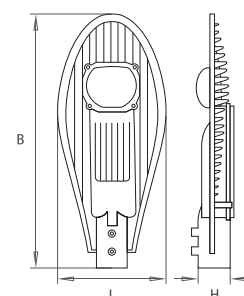
LUMENS	3108	5083	10096
CCT	3000K / 4000K / 6500K		
CRI	> 80		

PHYSICAL SPECIFICATIONS

DIMENSIONS (mm)	400x171x50	510x215x70	720x275x87
PIPE ID (mm)	φ 42	φ 53	φ 64
IP	IP67		

USAGE

TYPE	OUTDOOR
APPLICATIONS	ROADS, HIGHWAYS, INDUSTRIES, PLAY GROUNDS, PARTY PLOTS, PARKINGS



FLOOD LIGHTS | *EcoSprint* INDUSTRIAL



Saving energy with ambiance

REGOR LED flood lights collection delivers excellent lighting performance. With its flood beam optics design, it provides uniquely effective illumination for display cabinets and merchandise tables.

REGOR integrated LED floodlights, contemporary in their essence and designs, besides looking good, cast a comfortable glow over a large area—balancing form and function. Their compact form means that space is never an issue. Designed to endure all weather conditions, they illuminate your Industrial space and outside world with undiminished beauty to make you feel the class and supremacy.





Regor Frame & Diffused Series Flood Lights are highly energy efficient, reliable and effective in saving operating costs. High quality lens provides uniform and wider light distribution with appropriate level of lighting that enhances the architectural creations.

LED FLOOD LIGHTS FRAME & DIFFUSED

EcoSprint
INDUSTRIAL



FRAME SERIES & DIFFUSED SERIES

PRODUCT CODE	RFL-401	RFL-402	RFL-403	RFL-404	RFL-405	RFL-406	RFL-407	RFL-408	RFL-409	RFL-410
--------------	---------	---------	---------	---------	---------	---------	---------	---------	---------	---------

TECHNICAL SPECIFICATIONS

POWER	10W	20W	30W	50W	80W	100W	150W	200W	250W	300W
VOLTAGE	140-290 Volt AC, 50Hz									
CURRENT(@230V)	0.0434 A	0.0869 A	0.130 A	0.217 A	0.348 A	0.434 A	0.652 A	0.869 A	1.08 A	1.30 A
POWER FACTOR	> 0.90									

LIGHTING SPECIFICATIONS

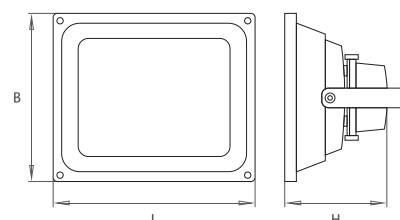
FRAME SERIES LUMENS	965	1908	2863	4750	7678	9583	14356	19126	23850	28609
CCT	3000K / 4000K / 6500K									
CRI	> 80									

PHYSICAL SPECIFICATIONS

DIMENSIONS (mm)	110x90x85	180x140x105	182x143x102	225x185x134	287x236x145	287x236x145	388x290x155	425x328x178	518x328x178	518x328x178
IP	IP67									

USAGE

TYPE	OUTDOOR									
APPLICATIONS	INDUSTRIES, PARKINGS, RESORTS, PARTY PLOTS, PLAY GROUNDS									





Regor COB Series Flood Lights with high efficiency glass lens ensures wider & uniform light distribution. With specially designed mounting bracket, they can be used for variety of outdoor or indoor applications to provide reliable and low cost operation.



COB SERIES

PRODUCT CODE	RFL-421	RFL-422	RFL-423
--------------	---------	---------	---------

TECHNICAL SPECIFICATIONS

POWER	50W	100W	150W
VOLTAGE	140-290 Volt AC, 50Hz		
CURRENT(@230V)	0.217 A	0.134 A	0.652 A
POWER FACTOR	> 0.90		

LIGHTING SPECIFICATIONS

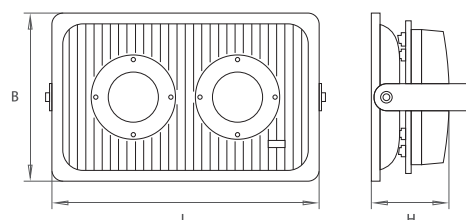
LUMENS	4882	9865	14634
CCT	3000K / 4000K / 6500K		
CRI	> 80		

PHYSICAL SPECIFICATIONS

DIMENSIONS (mm)	215x200x115	370x235x130	513x235x130
IP	IP67		

USAGE

TYPE	OUTDOOR
APPLICATIONS	INDUSTRIES, PARKINGS, RESORTS, PARTY PLOTS, PLAY GROUNDS



HIGH BAY LIGHTS | **EcoRoyal** INDUSTRIAL

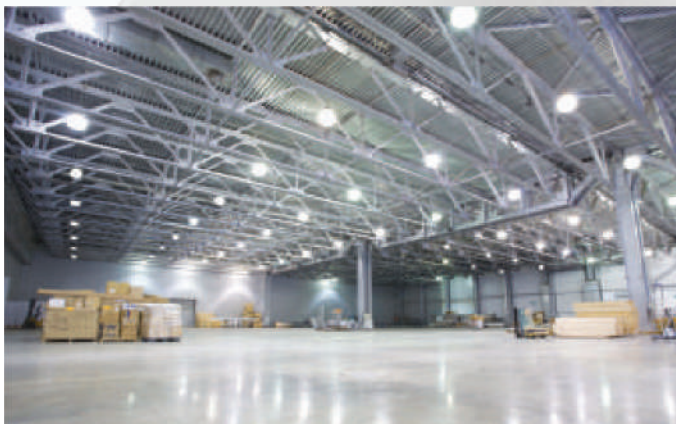


At home with the height

REGOR LED high bay lighting in industrial spaces has a profound effect on the well-being, productivity and worker vitality. Effectively lit and attractive environments enhance your image and increase the total value of your facility.

REGOR LED high bay collection precisely manages the lighting in a facility with a combination of control strategies, allowing you to deliver the optimum light levels for performing tasks safely and effectively. By integrating luminaires with sophisticated controls and comprehensive management systems, you can streamline business activities while saving energy and ensuring employee satisfaction, as ultimately joy and comfort are the privilege of any team.





Robust and reliable Regor High Bay Lights that changes the way to illuminate industries and ensure higher energy optimisation. Specially designed extruded aluminium heat sink ensures proper heat dissipation resulting in long service life. Unique vertical fin design avoids dust accumulation resulting in reliable performance.



HIGH BAY

PRODUCT CODE	RHB-821	RHB-822	RHB-823
--------------	---------	---------	---------

TECHNICAL SPECIFICATIONS

POWER	50W	100W	150W
VOLTAGE	140-290 Volt AC, 50Hz		
CURRENT(@230V)	0.217 A	0.134 A	0.652 A
POWER FACTOR	> 0.90		

LIGHTING SPECIFICATIONS

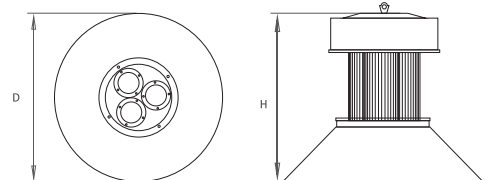
LUMENS	4895	9872	14642
CCT	3000K / 4000K / 6500K		
CRI	> 80		

PHYSICAL SPECIFICATIONS

DIMENSIONS (mm)	φ 410x325	φ 410x455	φ 495x455
IP	IP67		

USAGE

TYPE	OUTDOOR
APPLICATIONS	INDUSTRIES, STADIUMS



ACCULITE DEVICES

Survey No. 213, Plot No.3C,
Amrut Ind. Estate, B/h. Hotel Shiv,
Nr. Shapar Chowkdi, Veraval (Shapar),
Rajkot-360 024 Gujarat, India.

+91-99096 01989
info@regorled.com
www.regorled.com

